

FOR LEASE

VILLAGE SQUARE BUILDING

NAI Commercial



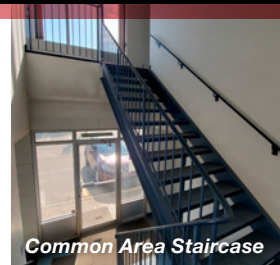
2ND FLOOR, 12106 - 163 STREET | EDMONTON, AB | 2ND FLOOR OFFICE

PROPERTY DESCRIPTION

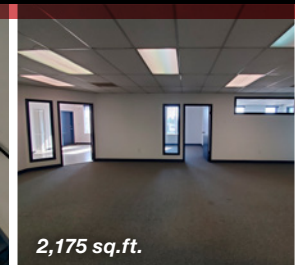
- 2,175; 2,304 or 4,479 sq.ft.± rentable sq.ft.±
- Office space is developed into private offices, washrooms, etc.
- Immediately available
- Building is conveniently located on 163 Street just north of 118th Avenue, with quick access to 170th Street, 156 Street, Yellowhead Trail and Anthony Henday Drive

KAREN CHAYKA

Senior Associate
587 635 2481
kchayka@naiedmonton.com



Common Area Staircase



2,175 sq.ft.



2,175 sq.ft.



NAI COMMERCIAL REAL ESTATE INC.
4601 99 STREET NW, EDMONTON AB, T6E 4Y1



780 436 7410



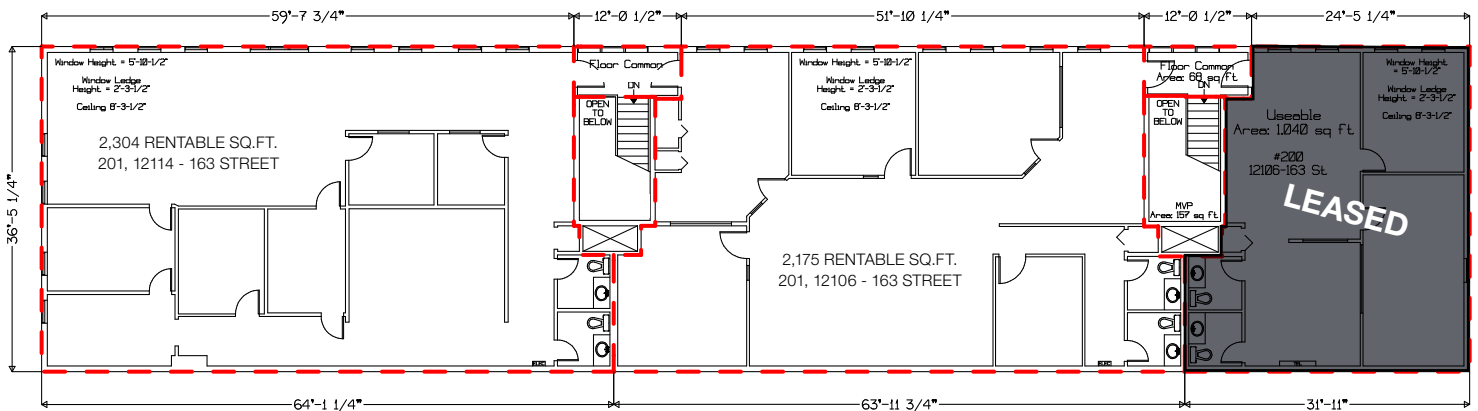
NAIEDMONTON.COM

ADDITIONAL INFORMATION

AREA AVAILABLE	
2ND FLOOR OFFICE:	2,175; 2,304 or 4,479 sq.ft. ±
LEGAL DESCRIPTION	Lot 1, Block 2, Plan 4321RS
ZONING	IM (Medium Industrial)
AVAILABLE	Immediately - Vacant
AIR CONDITIONED	Yes
NET LEASE RATES	
2ND FLOOR OFFICE	\$5.00/sq.ft./annum
OPERATING COSTS	
2ND FLOOR OFFICE	\$4.55/sq.ft./annum (2023 estimate) Includes property taxes, building insurance and common area utilities



Village Square – 2nd Floor



KAREN CHAYKA

Senior Associate
587 635 2481
kchayka@naiedmonton.com

